

MULTI-FUNCTIONAL COMPUTER TABLE

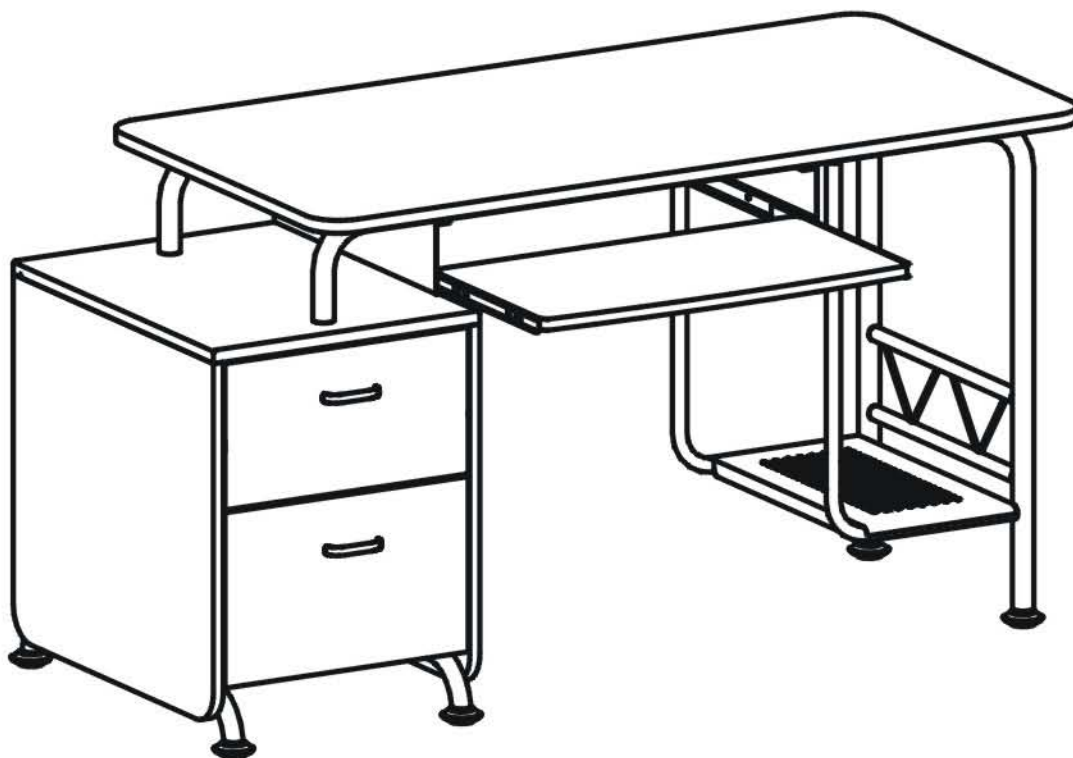
ASSEMBLY INSTRUCTION

TECHNI
MOBILI

IMPORTANT: Surfaces must be cleaned with a solution of a smooth soap and water, then cleared with a dry towel. Do not use solvents over surfaces or structural tubes.

MODEL RTA - Q328

In case of assistance, please contact us: Toll Free Customer Service:
1-866-782-8262 or e-mail our Customer Service:info@rtaproducts.com

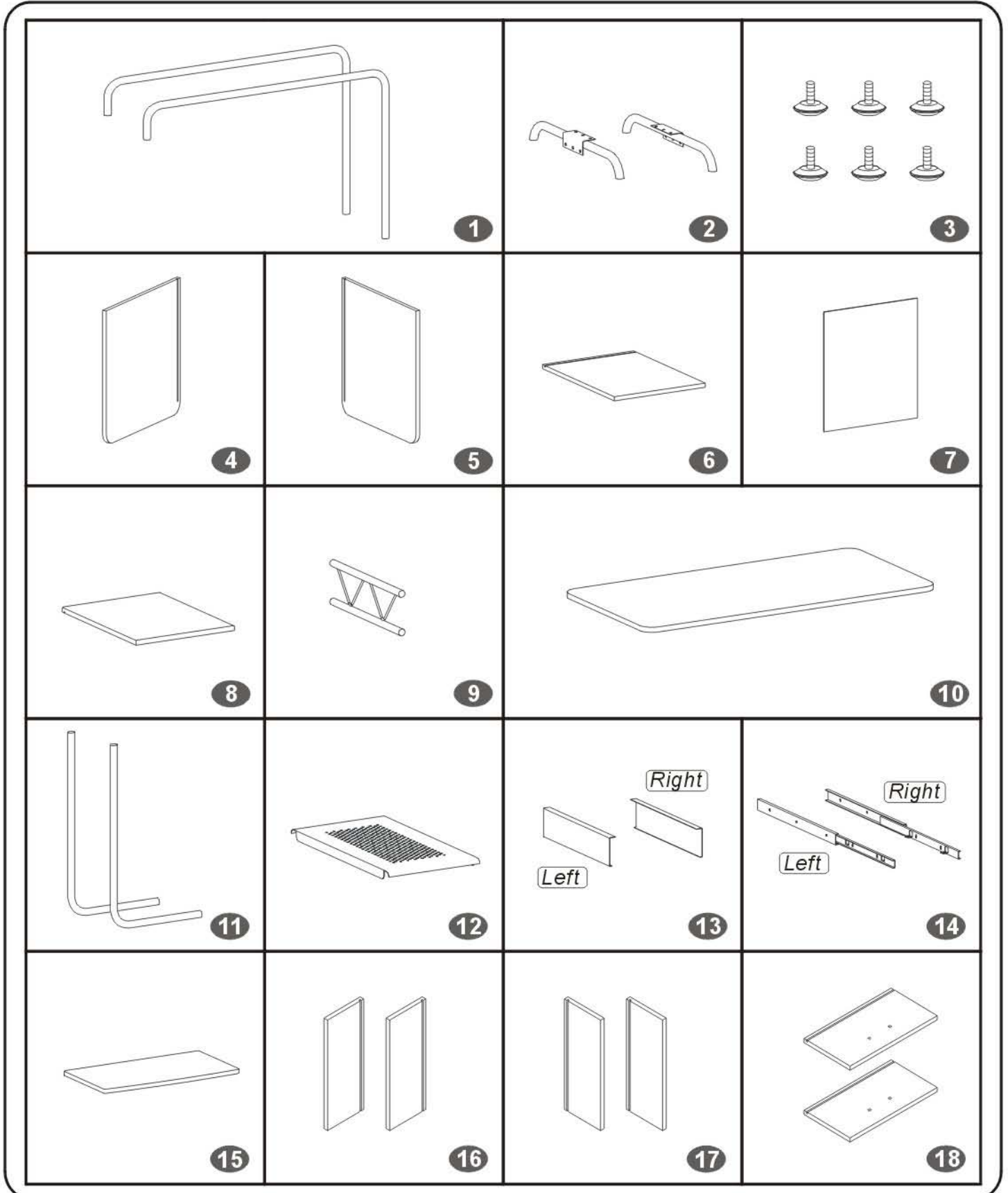


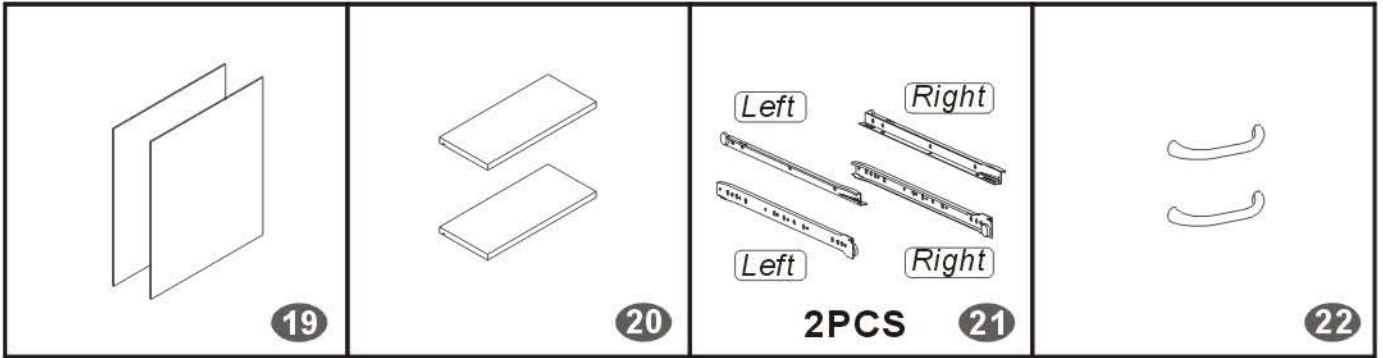
MODEL RTA-Q328

 **RTA**
PRODUCTS • LLC



Thanks for purchasing one of our products, please read carefully the assembly instructions before the installation (Attention: Do not tighten the screws before all screws are in place).

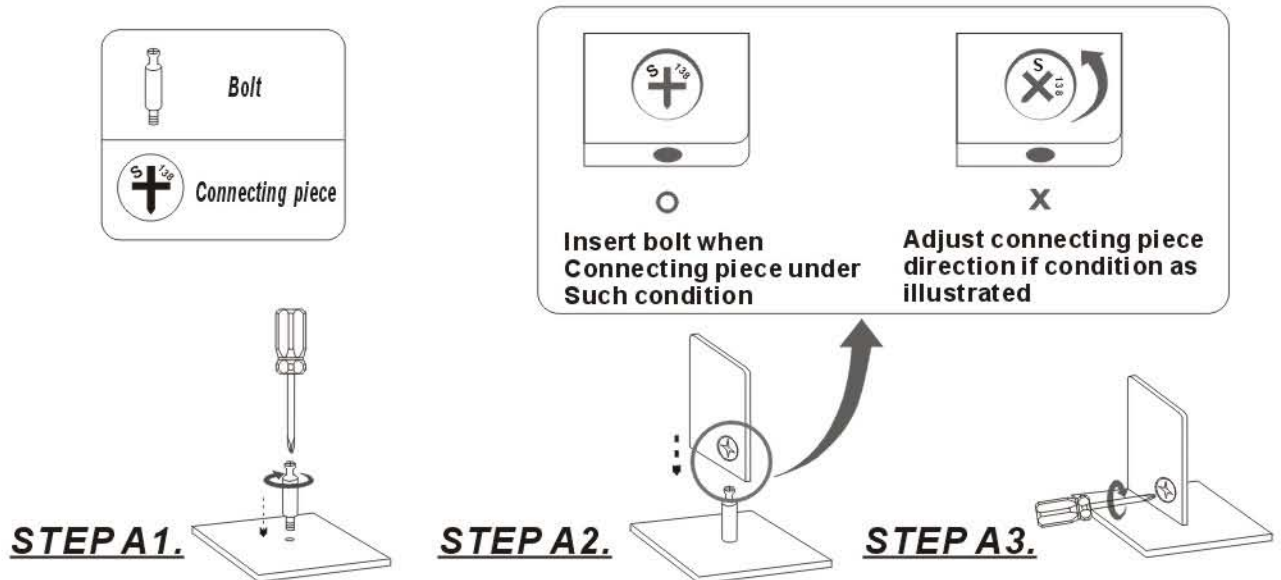


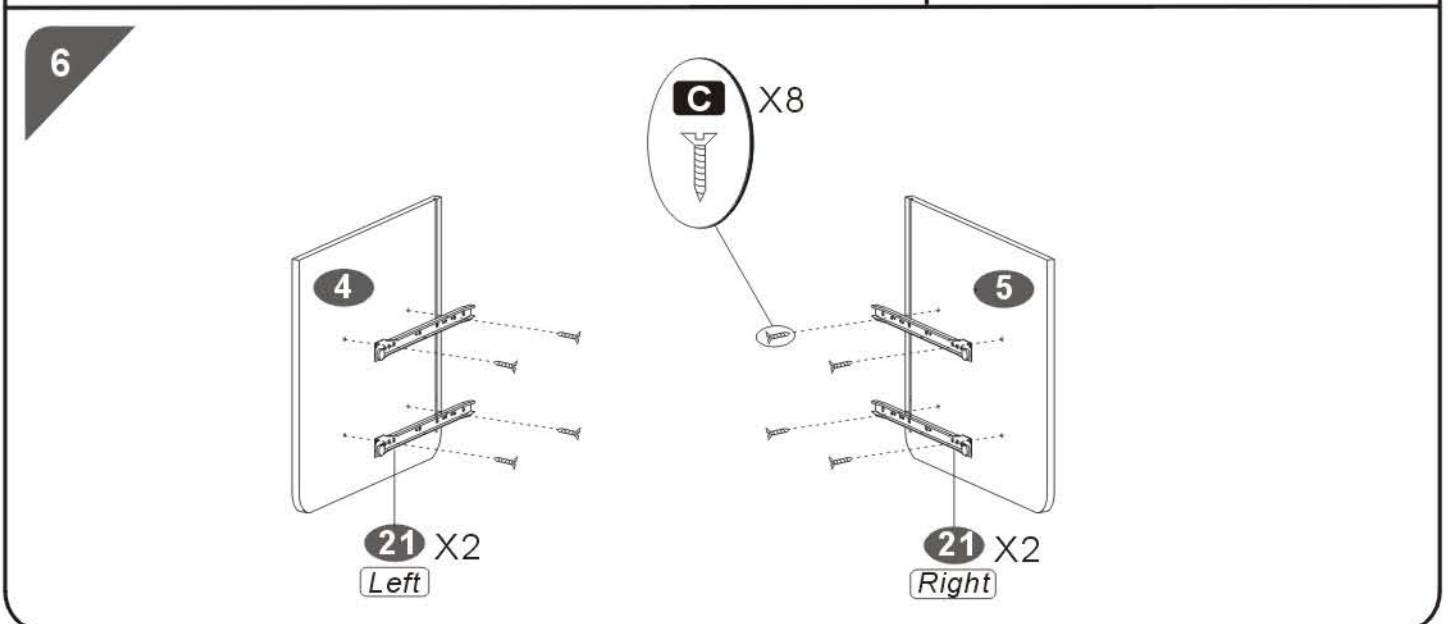
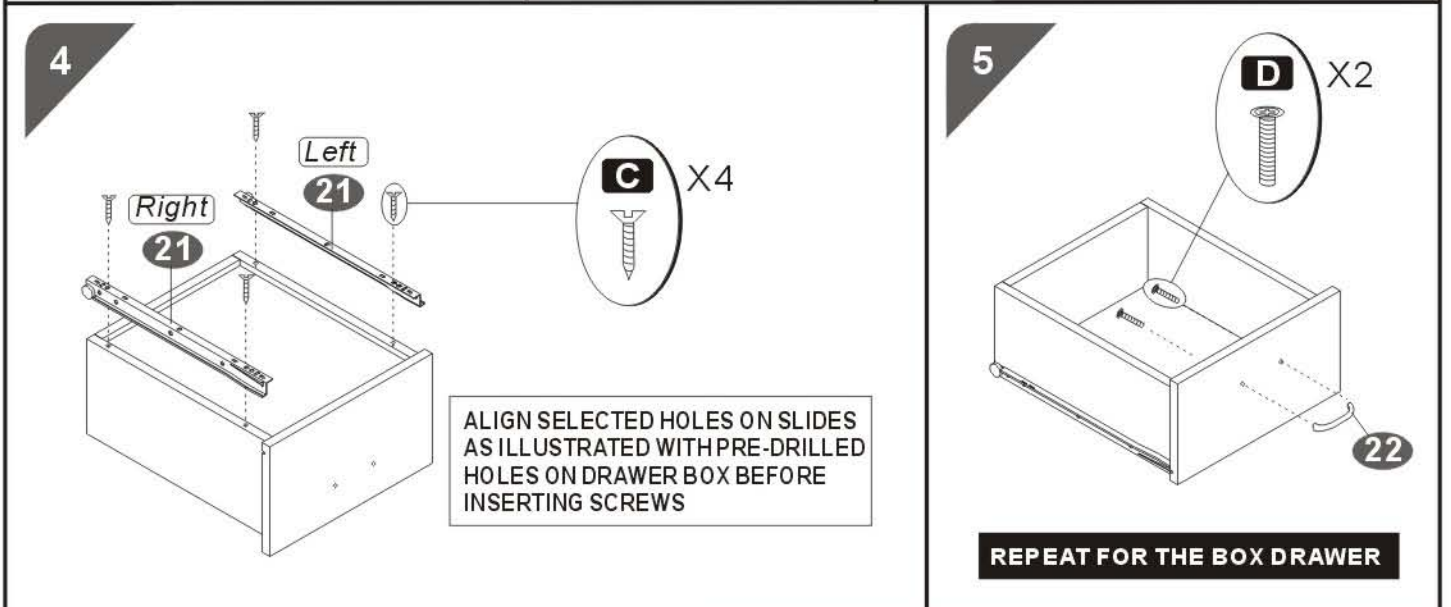
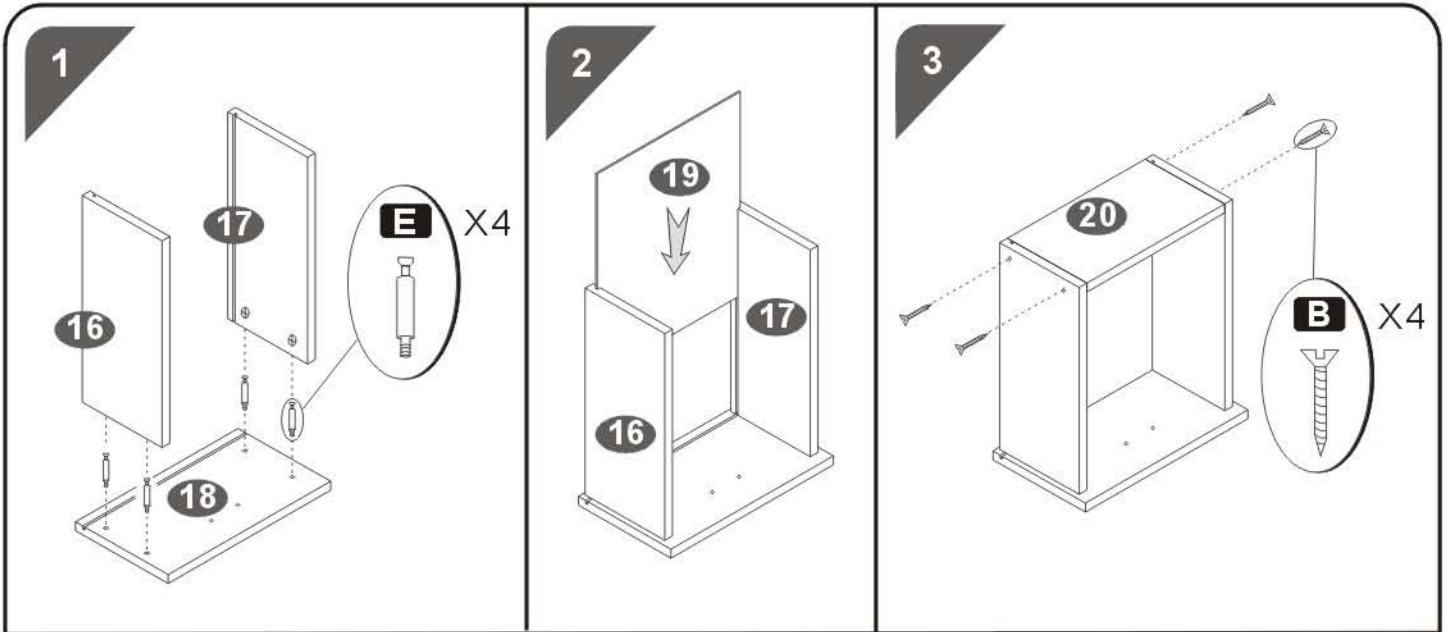


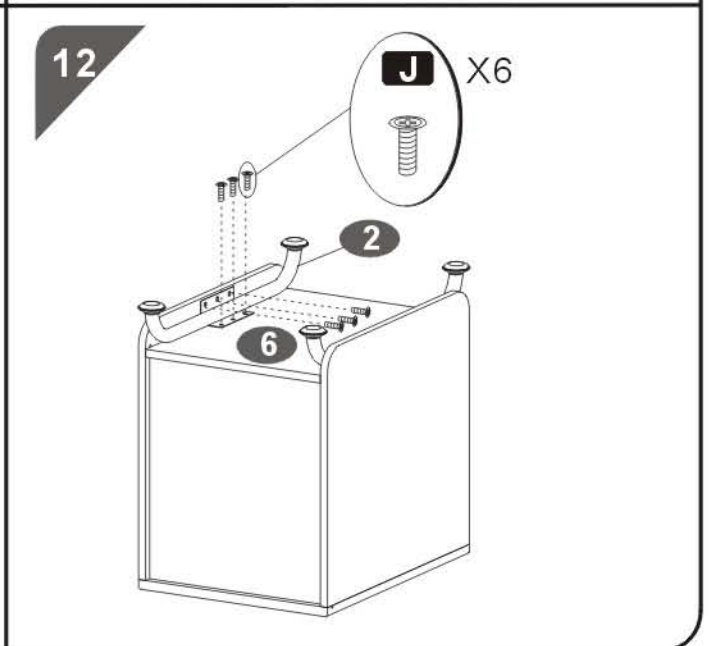
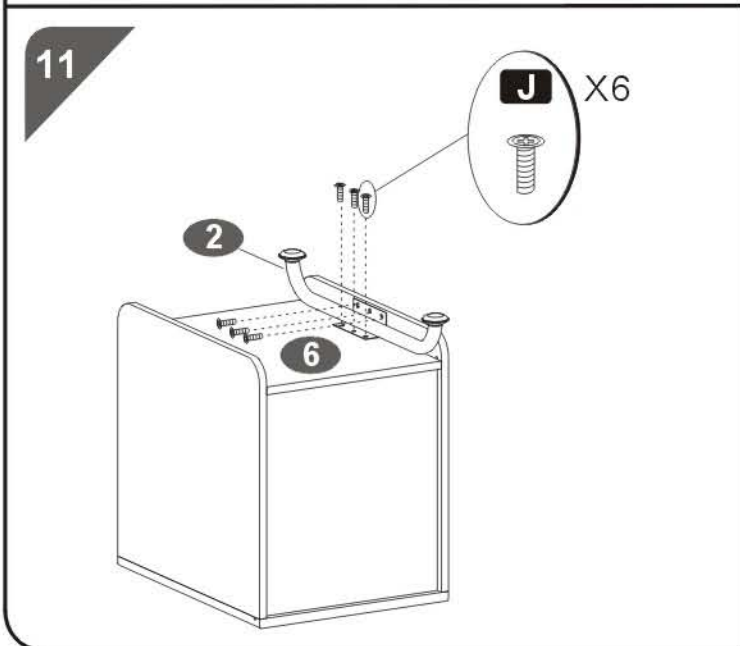
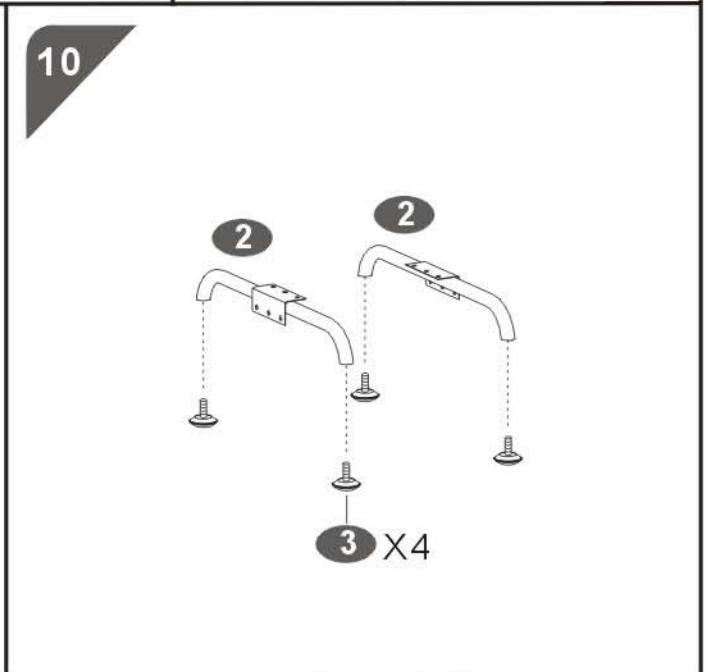
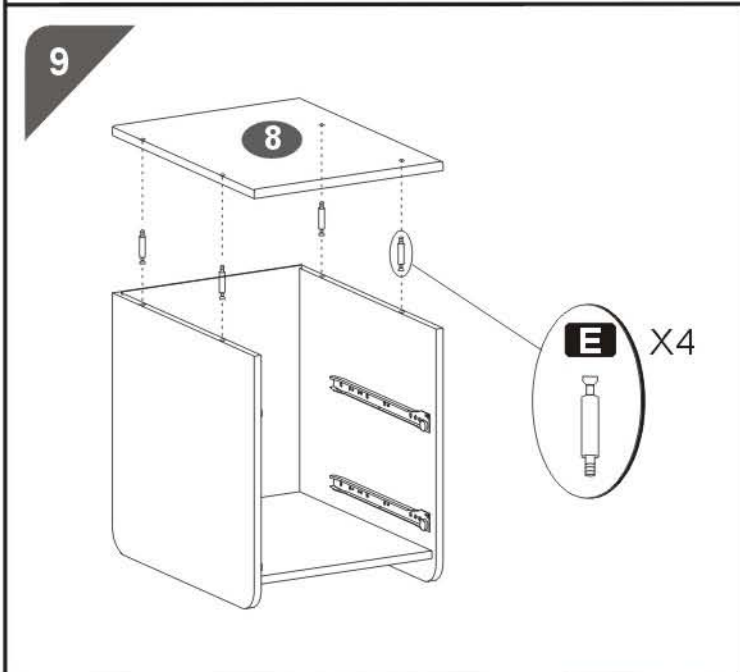
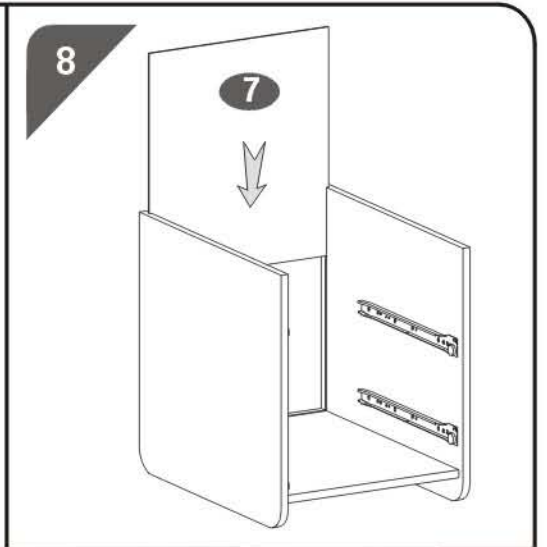
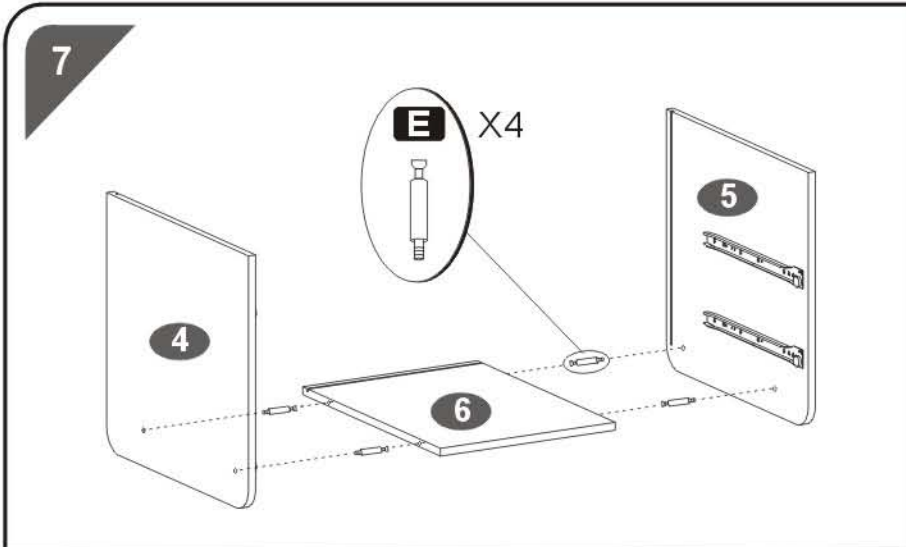
PART	QTY.	ITEM	
A	4	6X40 MM	
B	8	4X30 MM	
C	16	3X15 MM	
D	4	4X20 MM	
E	16	6X40 MM	
F	8	6X35 MM	
G	4	4X14 MM	
H	2	8X35 MM	

PART	QTY.	ITEM	
I	4	6X35 MM	
J	12	6X12 MM	
K	4	4X4 MM	
	1		
	1		

6X40MM BOLT INSTALL METHOD AS FOLLOW:

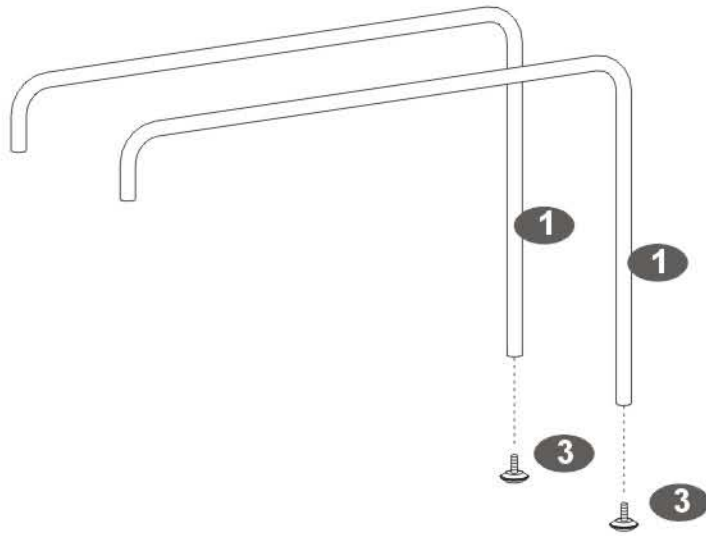




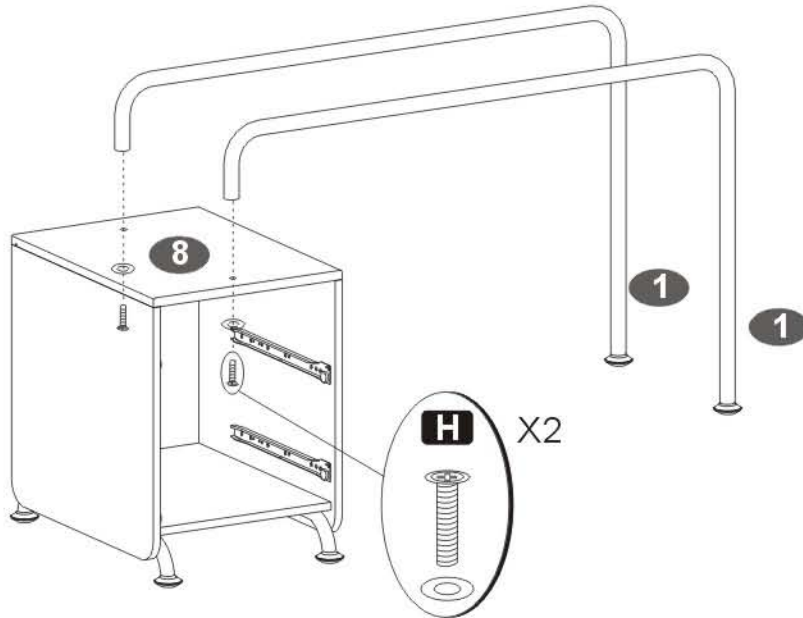




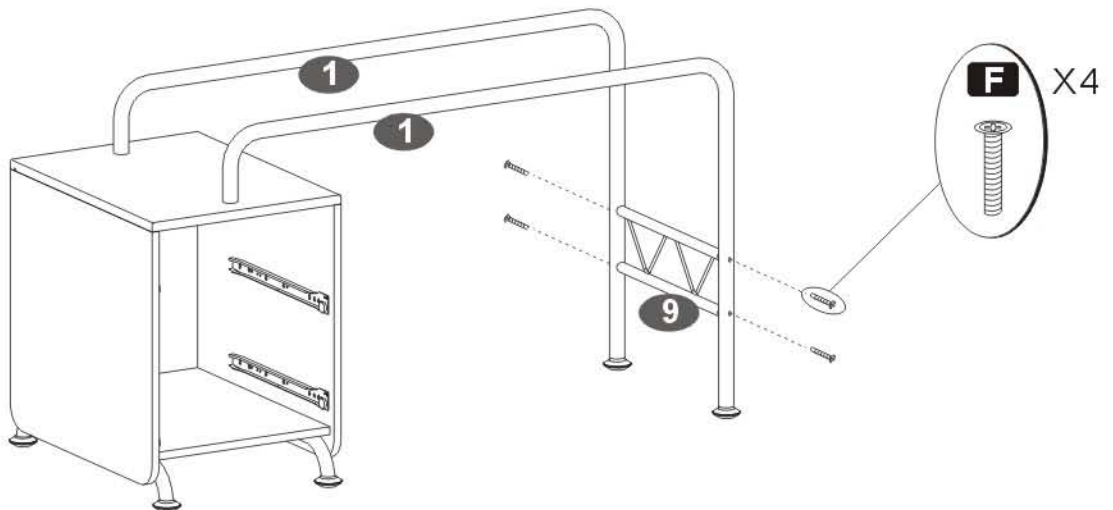
13



14

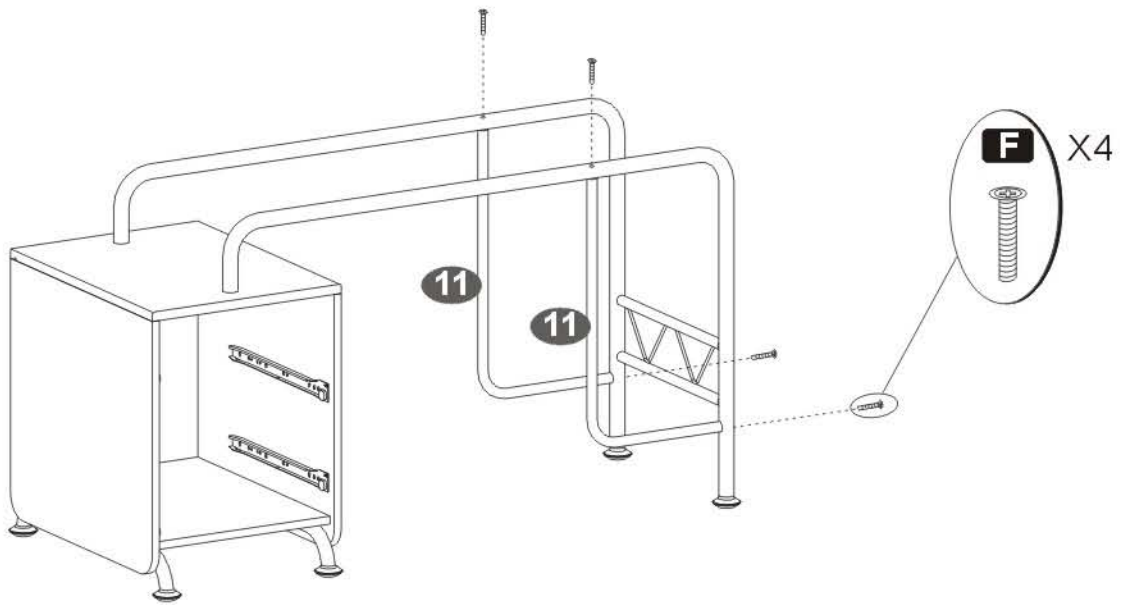


15

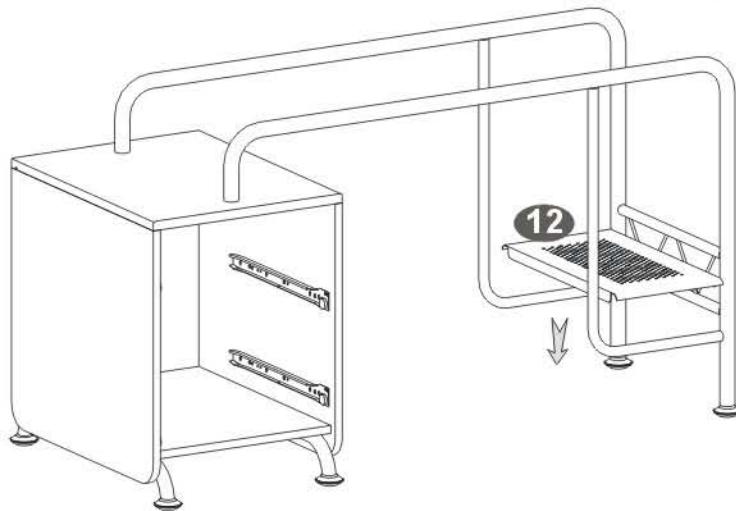




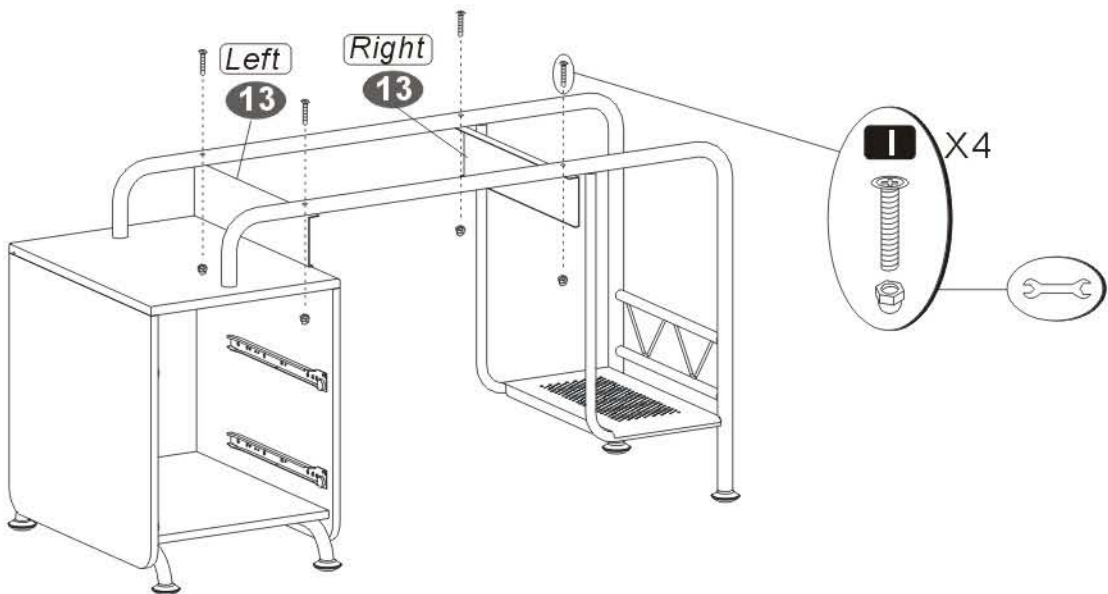
16



17

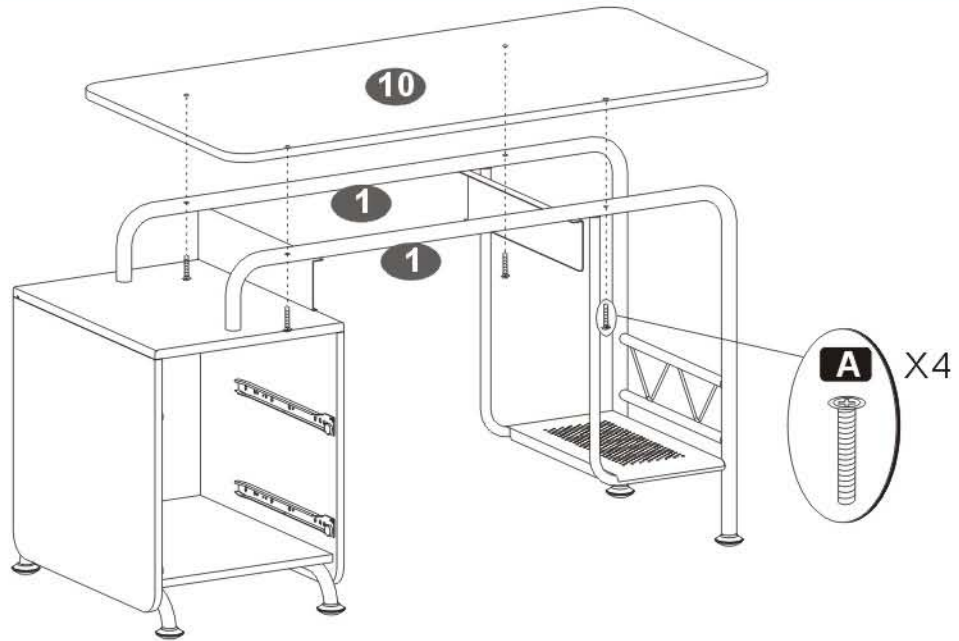


18

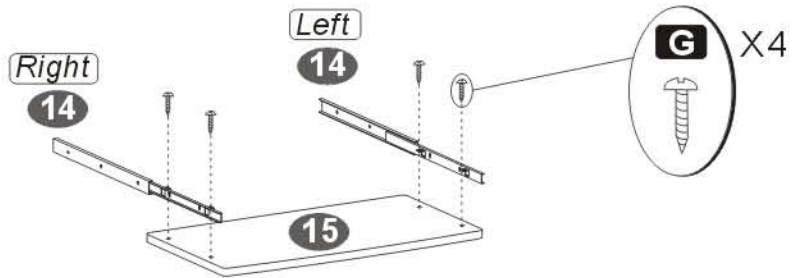




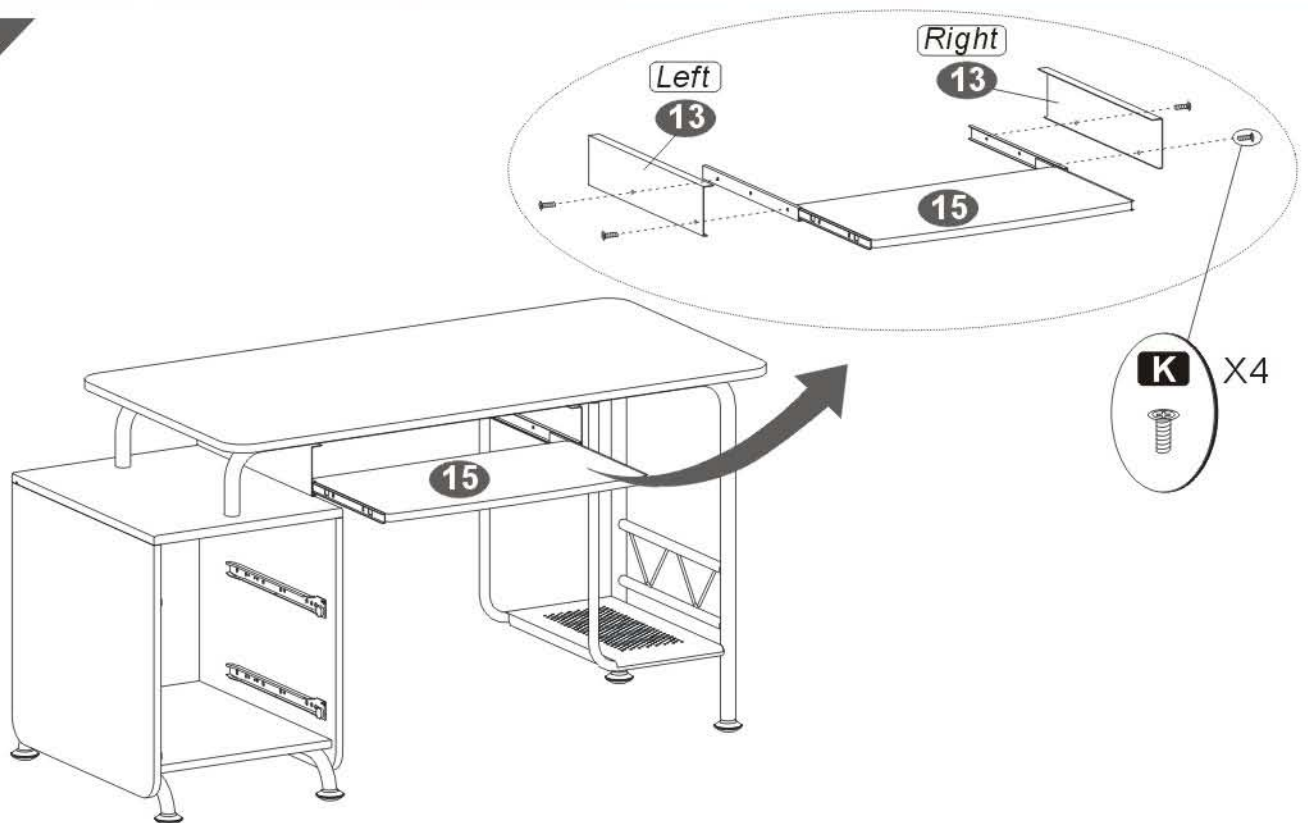
19



20

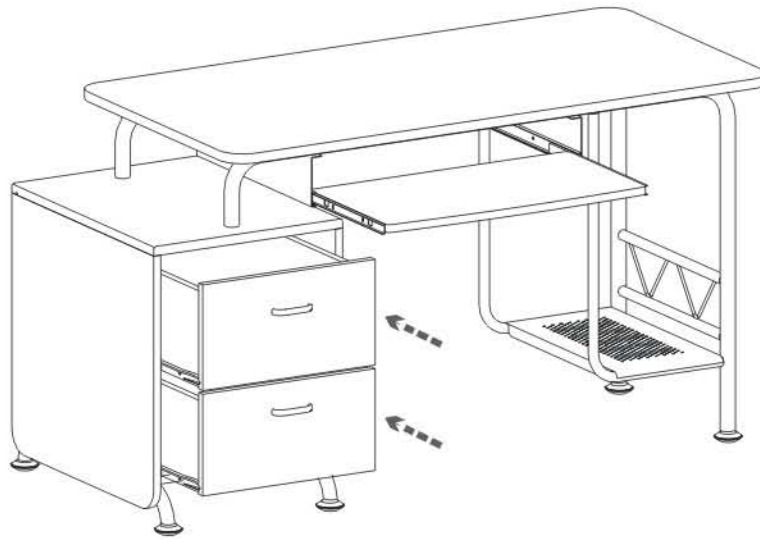


21

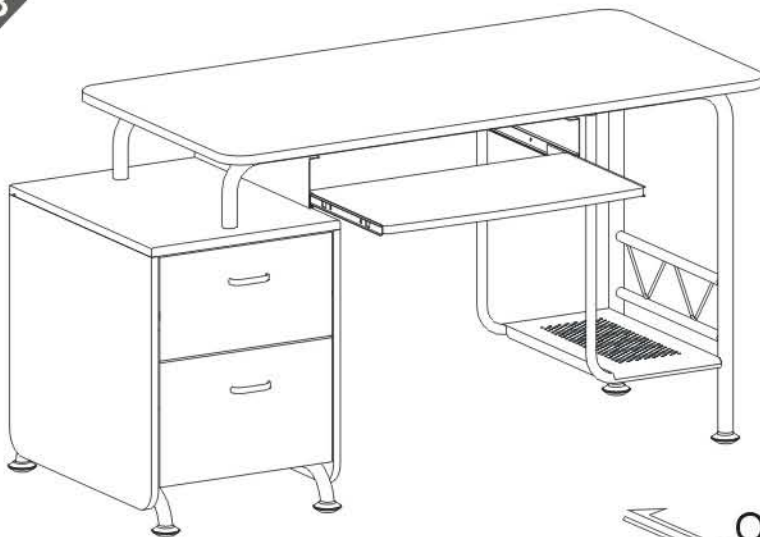




22



23



OR

